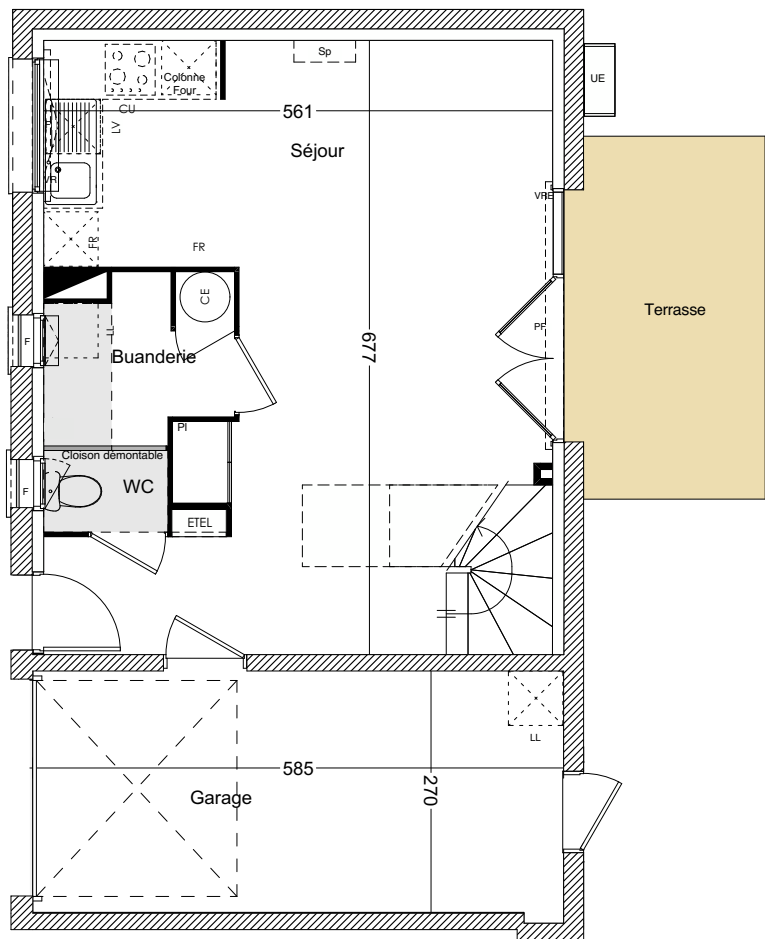
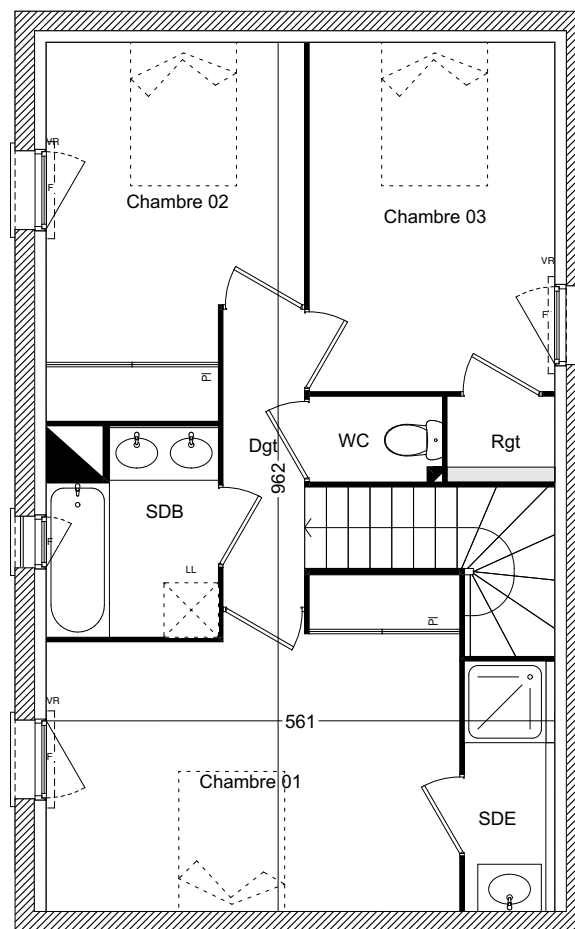


# VILLAS ZEN

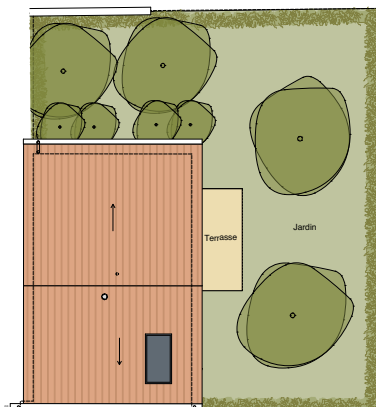
TOULOUSE · SAINT-SIMON



Plan RDC



Plan R+1



Plan des jardins

VILLA N° 07 Type T4D	
Entrée/Séjour/Cuisine/pl	29.27 m <sup>2</sup>
Buanderie	3.74 m <sup>2</sup>
Chambre 1 / pl	15.28 m <sup>2</sup>
Chambre 2 / pl	10.69 m <sup>2</sup>
Chambre 3 / pl	11.56 m <sup>2</sup>
SDE	2.80 m <sup>2</sup>
SDB	4.43 m <sup>2</sup>
WC 1	1.23 m <sup>2</sup>
WC 2	1.39 m <sup>2</sup>
Dégagement	2.95 m <sup>2</sup>
<b>Total Habitable</b>	<b>83,34 m<sup>2</sup></b>
Terrasse	8.00 m <sup>2</sup>
Jardin	env 130 m <sup>2</sup>
Garage	15.28 m <sup>2</sup>

