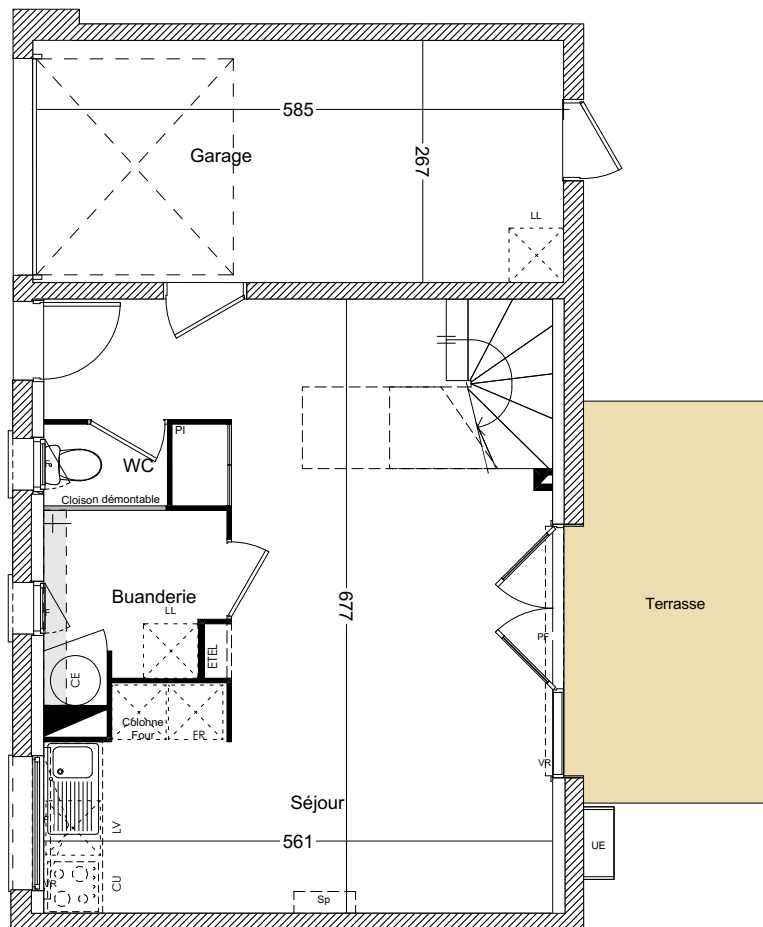
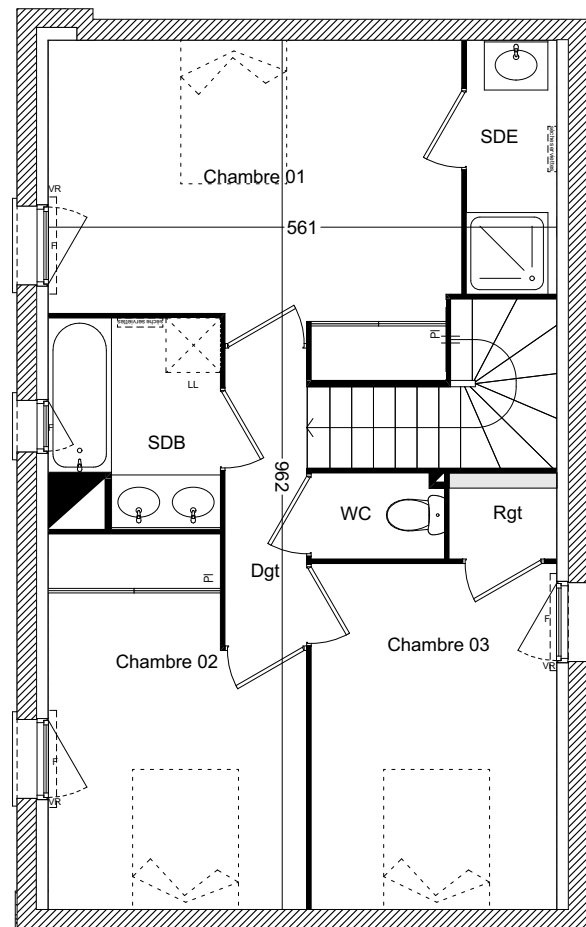


VILLAS ZEN

TOULOUSE · SAINT-SIMON



Plan RDC



Plan R+1



Plan des jardins

VILLA N° 08 Type T4D	
Entrée/Séjour/Cuisine/pl	29.27 m ²
Buanderie	3.74 m ²
Chambre 1 / pl	15.11 m ²
Chambre 2 / pl	10.69 m ²
Chambre 3 / pl	11.56 m ²
SDE	2.80 m ²
SDB	4.43 m ²
WC 1	1.23 m ²
WC 2	1.39 m ²
Dégagement	2.95 m ²
Total Habitable	83,17 m²
Terrasse	8.00 m ²
Jardin	env 59 m ²
Garage	15.28 m ²

