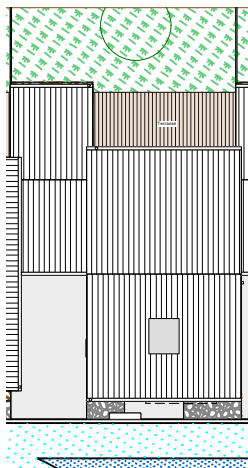
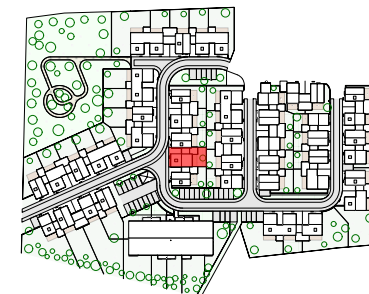
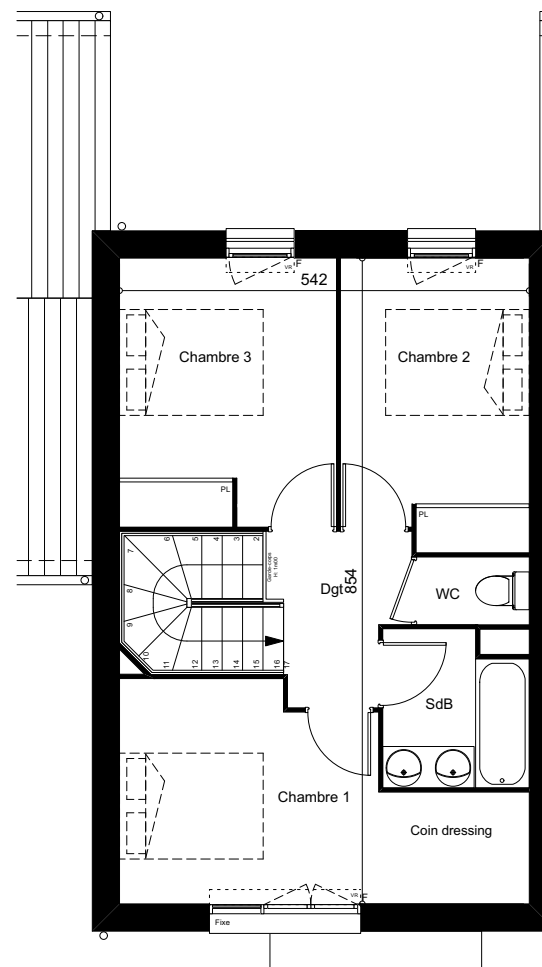
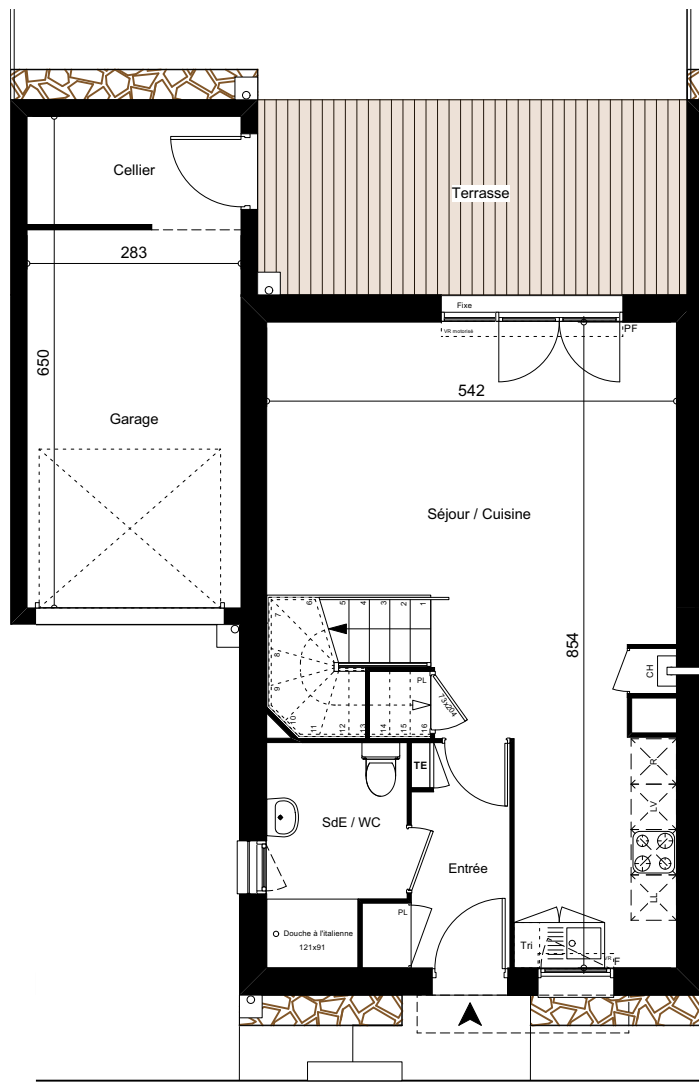




LES DEMEURES DE LA POINTE



0m 1m 2m 5m 10m



MAISON M22	
Type T4	
Surface du lot: 157m ²	
Entrée / pl	4,27 m ²
Séjour / cuisine / pl	32,52 m ²
Chambre 1 / coin dressing	12,62 m ²
Chambre 2 + pl	9,39 m ²
Chambre 3 / pl	10,19 m ²
SdB	3,81 m ²
SDE / WC	4,95 m ²
WC 2	1,35 m ²
Dégagement	3,68 m ²
Total Habitable	82,78 m²
Terrasse	14,65 m ²
Jardin	38,00 m ²
Garage (dont 4,05m ² de cellier)	18,20 m ²



0m 1m 2m 3m