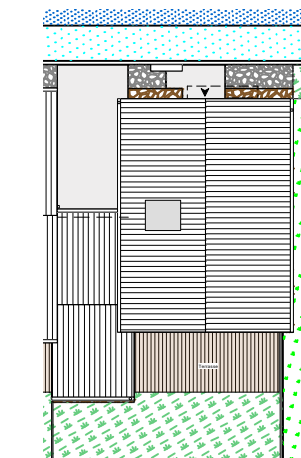
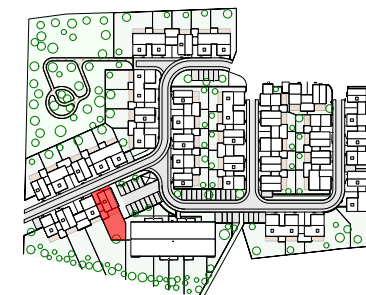
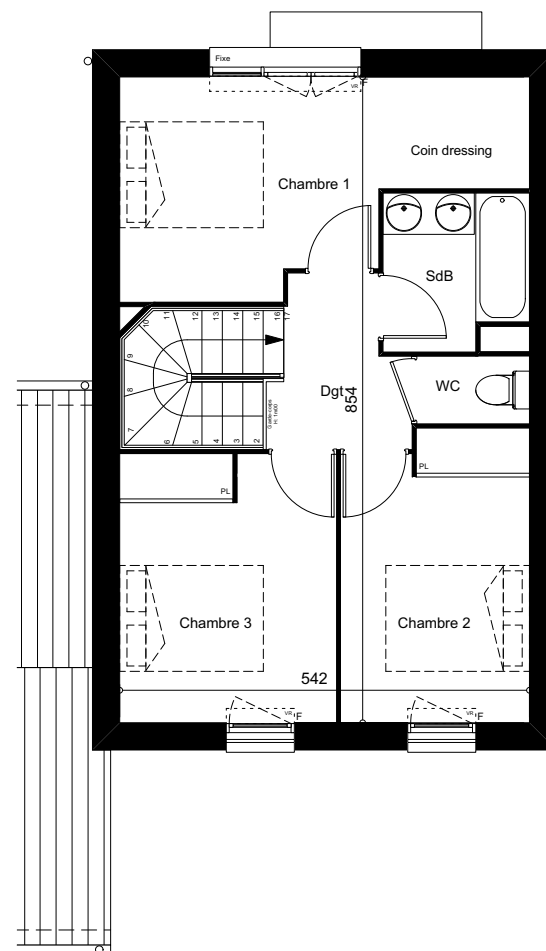
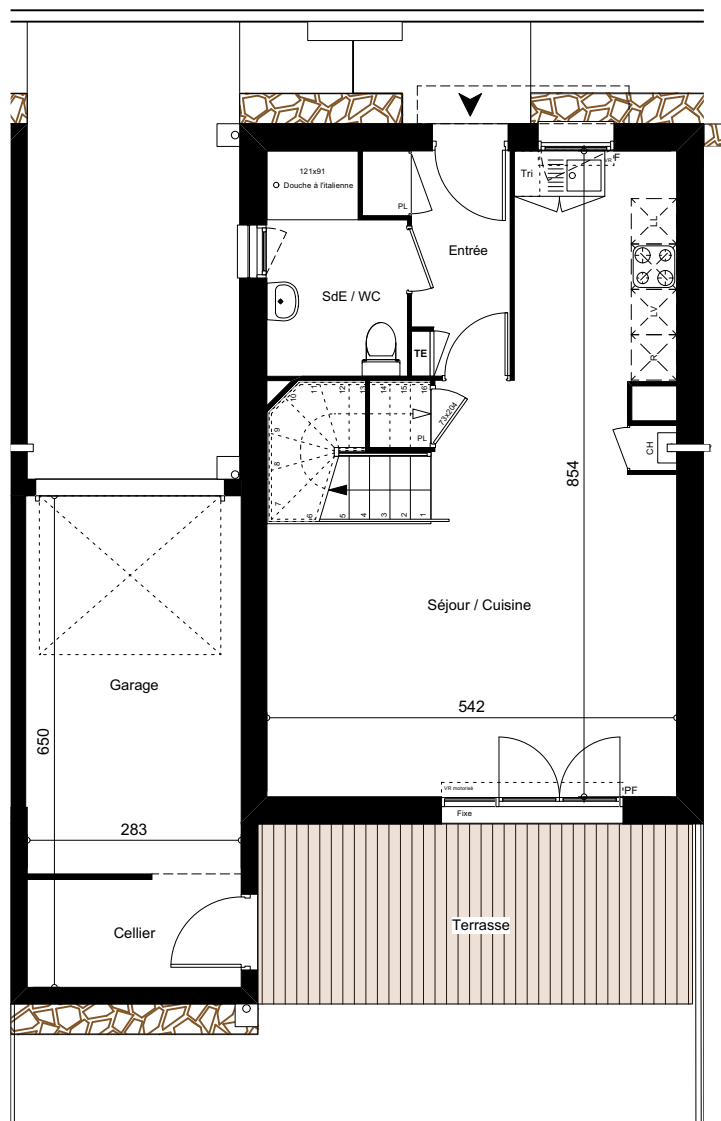




LES DEMEURES DE LA POINTE



0m 1m 2m 5m 10m



MAISON M04 Type T4

Surface du lot: 220m²

Entrée / pl	4,27	m ²
Séjour / cuisine / pl	32,52	m ²
Chambre 1 / coin dressing	12,62	m ²
Chambre 2 + pl	9,39	m ²
Chambre 3 / pl	10,19	m ²
SDB	3,81	m ²
SDE / WC	4,95	m ²
WC 2	1,35	m ²
Dégagement	3,68	m ²
Total Habitable	82,78	m²
Terrasse	13,68	m ²
Jardin	101,00	m ²
Garage (dont 4,05m ² de cellier)	18,20	m ²