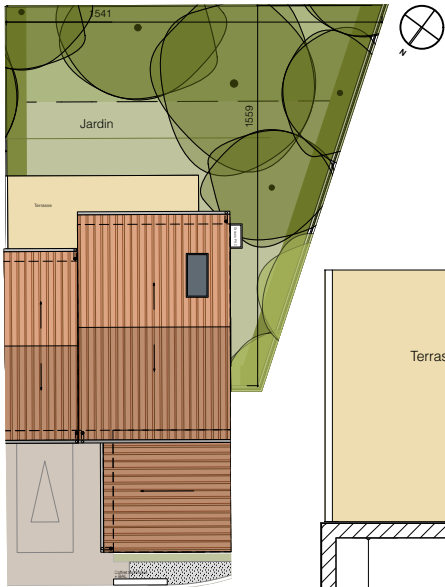


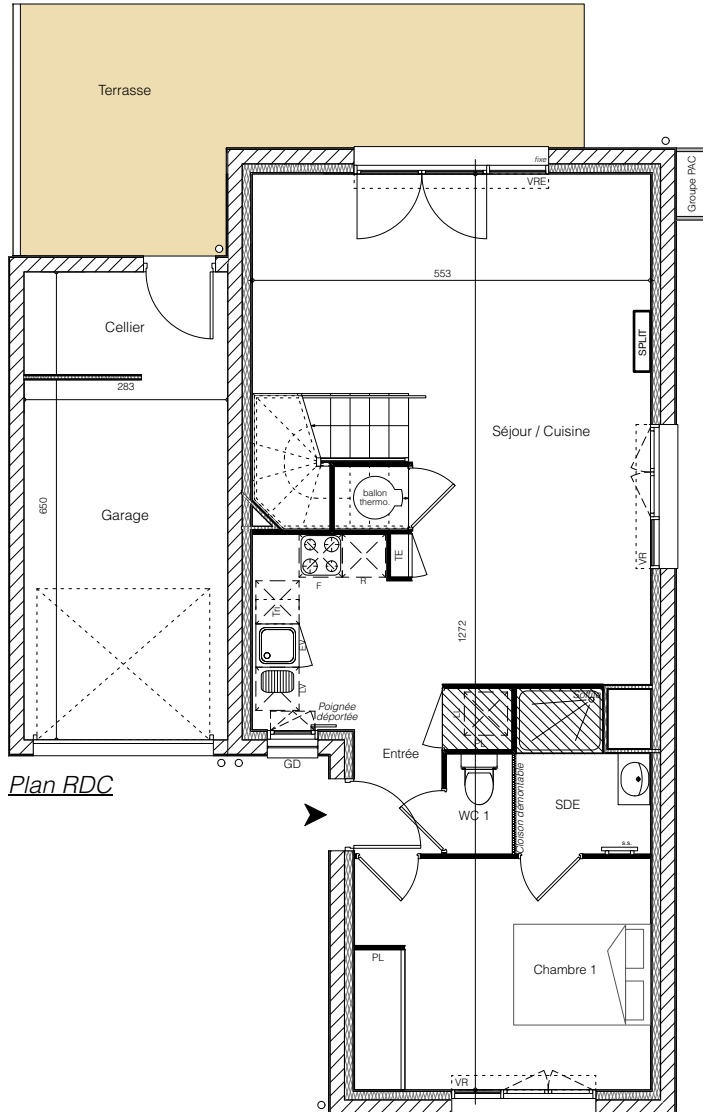


**LES DEMEURES
DE LA POINTE**

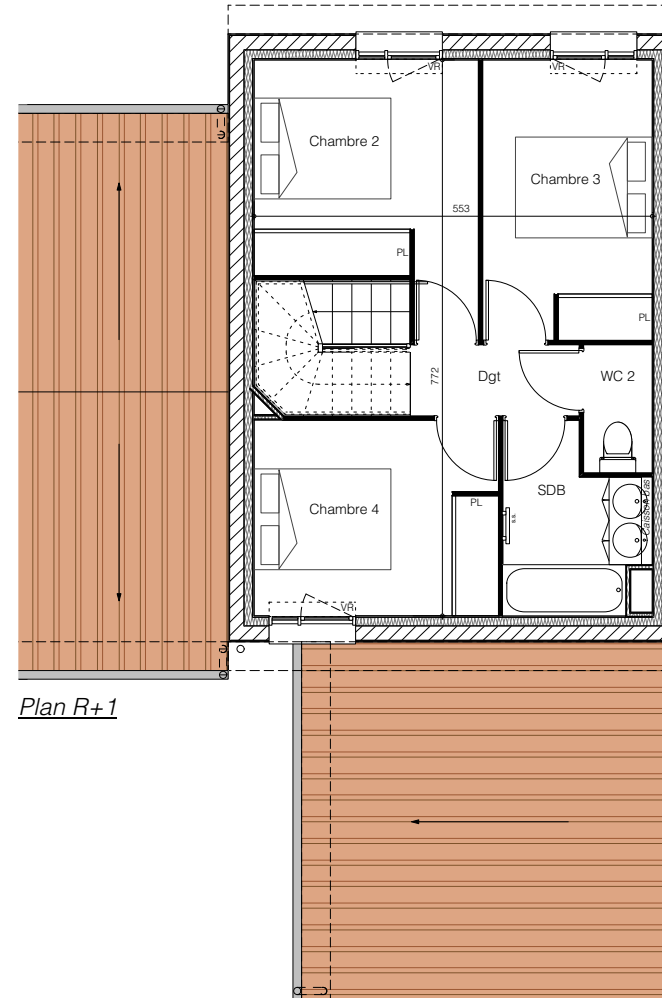


Plan des jardins

0 1 2 5 10m



Plan RDC



Plan R+1

MAISON M52	
Type T5	
Surface du lot: 280m ²	
Entrée / pl	2,11 m ²
Séjour / cuisine / pl	37,97 m ²
Chambre 1 / pl	13,19 m ²
Chambre 2 / pl	10,13 m ²
Chambre 3 / pl	9,17 m ²
Chambre 4 / pl	9,21 m ²
SDE	3,71 m ²
SDB	4,59 m ²
WC 1	1,28 m ²
WC 2	1,71 m ²
Dégagement	2,35 m ²
Total Habitable	95,42 m²
Terrasse	19,95 m ²
Jardin	123,00 m ²
Garage (dont 4,13m ² de cellier)	18,28 m ²

0 1 2 3m