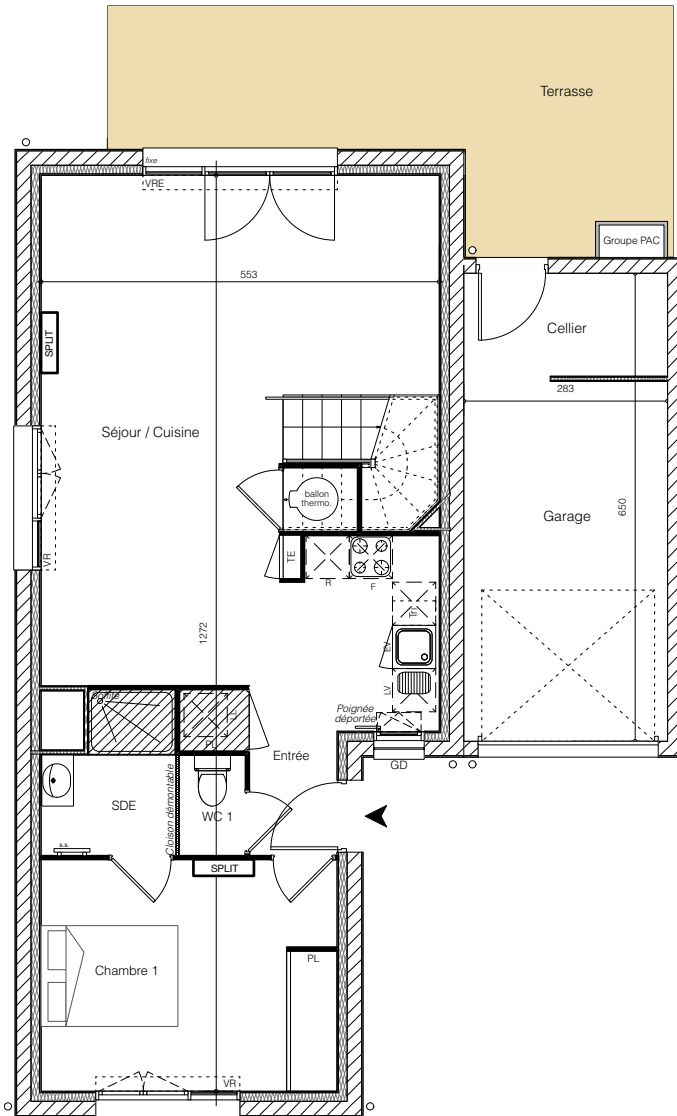
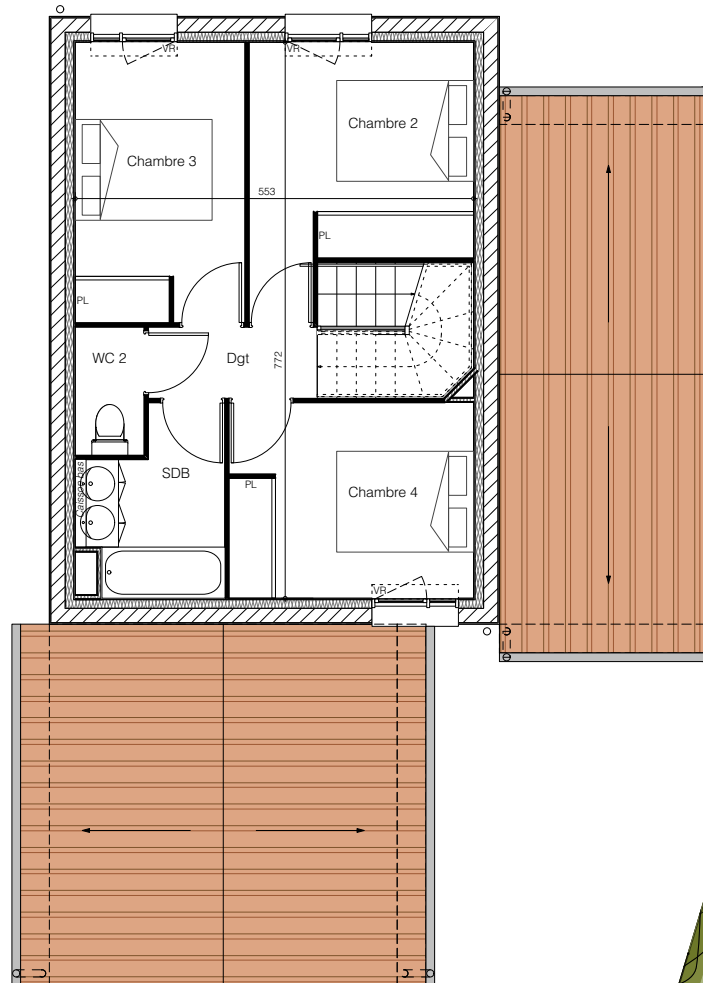




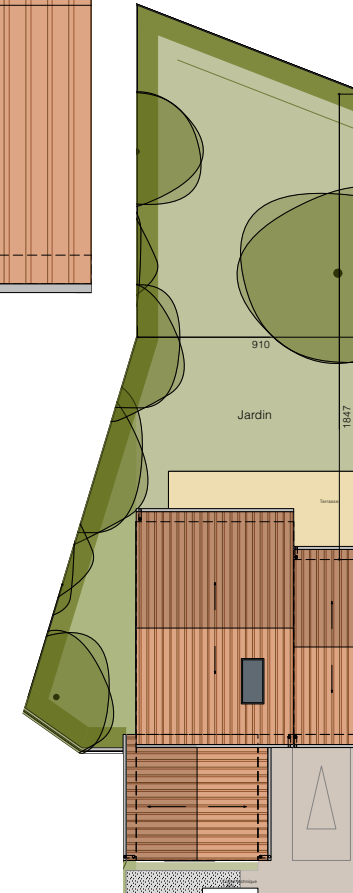
**LES DEMEURES
DE LA POINTE**



Plan RDC



Plan R+1



Plan des jardins

MAISON M53

Type T5

Surface du lot: 348m²

Entrée / pl	2,11 m ²
Séjour / cuisine / pl	37,97 m ²
Chambre 1 / pl	13,19 m ²
Chambre 2 / pl	10,13 m ²
Chambre 3 / pl	9,17 m ²
Chambre 4 / pl	9,21 m ²
SDE	3,71 m ²
SDB	4,59 m ²
WC 1	1,28 m ²
WC 2	1,71 m ²
Dégagement	2,35 m ²
Total Habitable	95,42 m²
Terrasse	20,07 m ²
Jardin	192,00 m ²
Garage (dont 4,13m ² de cellier)	18,28 m ²

