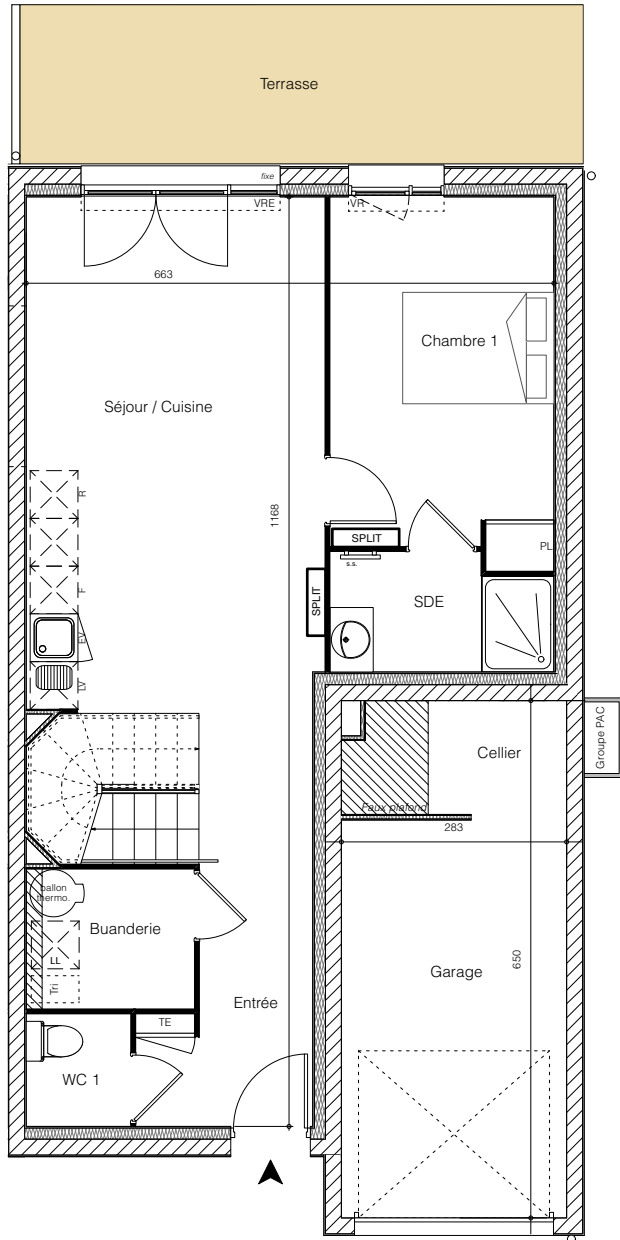
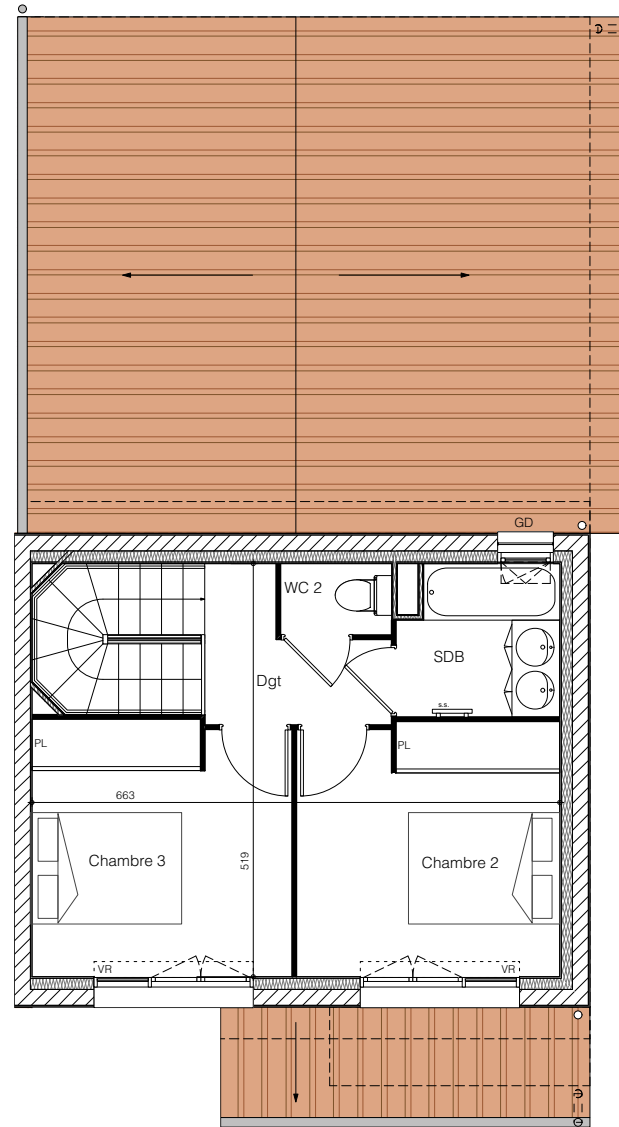




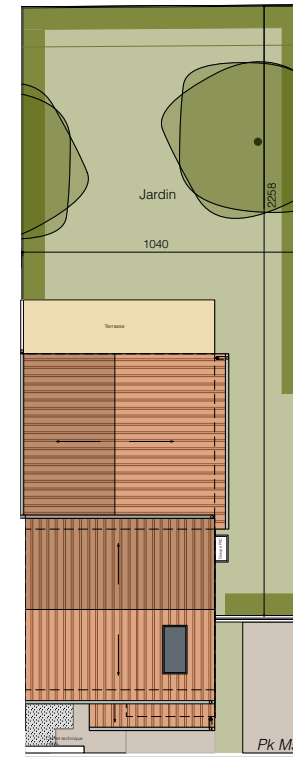
LES DEMEURES DE LA POINTE



Plan RDC



Plan R+1



Plan des jardins

MAISON M57

Type T4

Surface du lot: 292m²

Entrée / pl	6,94 m ²
Séjour / cuisine / pl	26,43 m ²
Chambre 1 / pl	12,65 m ²
Chambre 2 / pl	10,47 m ²
Chambre 3 / pl	10,41 m ²
SDE	4,00 m ²
SDB	3,72 m ²
WC 1	1,87 m ²
WC 2	1,26 m ²
Buanderie	3,75 m ²
Dégagement	3,39 m ²
Total Habitable	84,89 m²
Terrasse	14,16 m ²
Jardin	151,00 m ²
Garage (dont 3,98m ² de cellier)	18,13 m ²

0 1 2 5 10m

