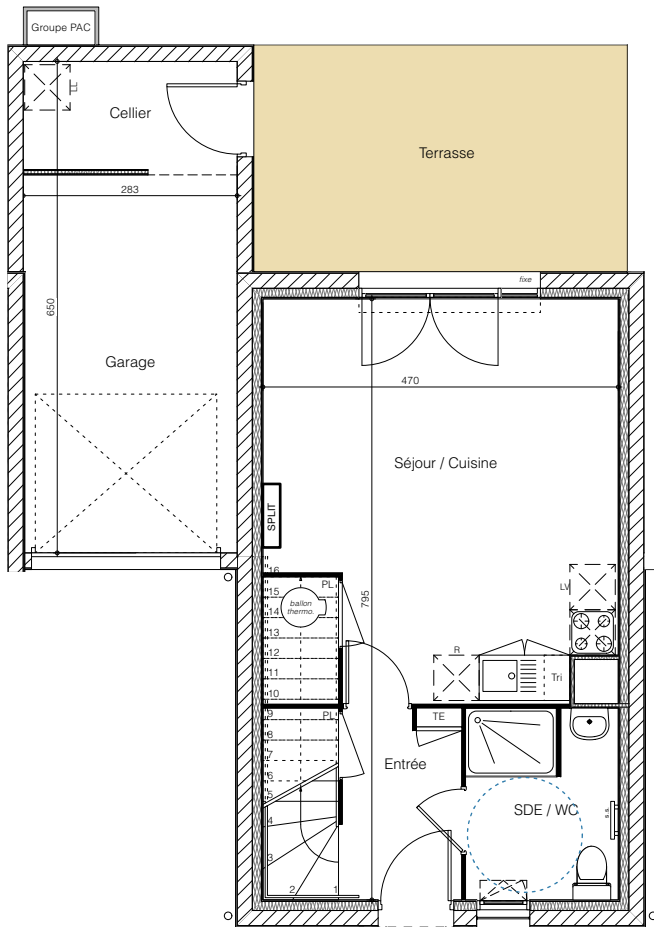
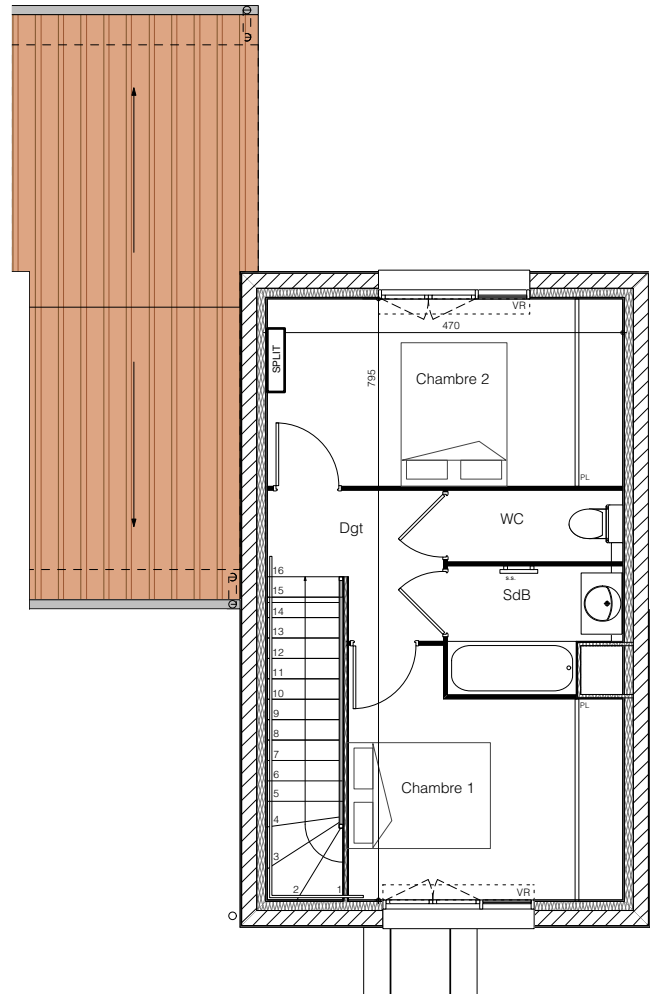




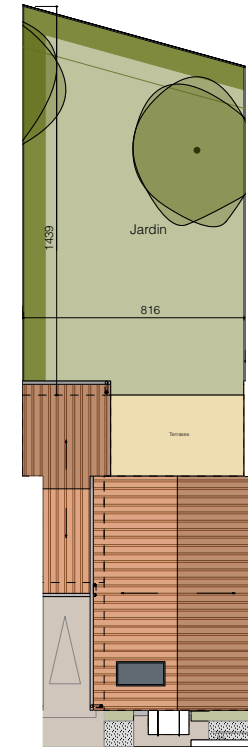
LES DEMEURES DE LA POINTE



Plan RDC



Plan R+1



Plan des jardins

MAISON M61	
Type T3	
Surface du lot: 218m ²	
Entrée / pl	3,78 m ²
Séjour / cuisine / pl	23,85 m ²
Chambre 1 / pl	10,54 m ²
Chambre 2 / pl	11,65 m ²
SDE / WC	5,23 m ²
SdB	3,53 m ²
WC	2,20 m ²
Dégagement	3,74 m ²
Total Habitable	64,52 m²
Terrasse	14,82 m ²
Jardin	108,00 m ²
Garage (dont 4,13m ² de cellier)	18,28 m ²

