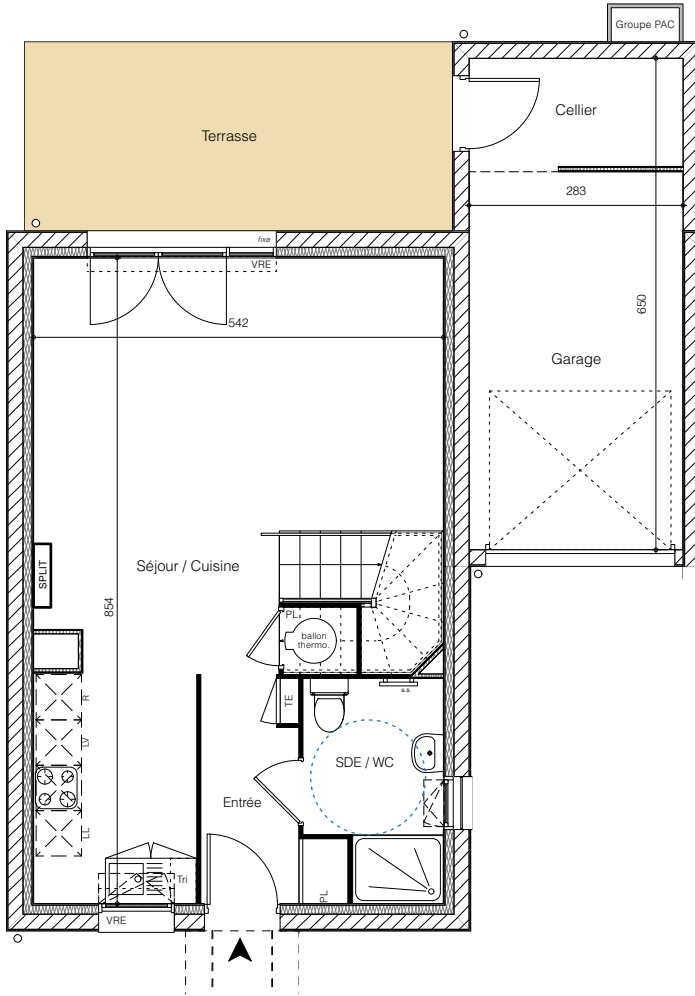


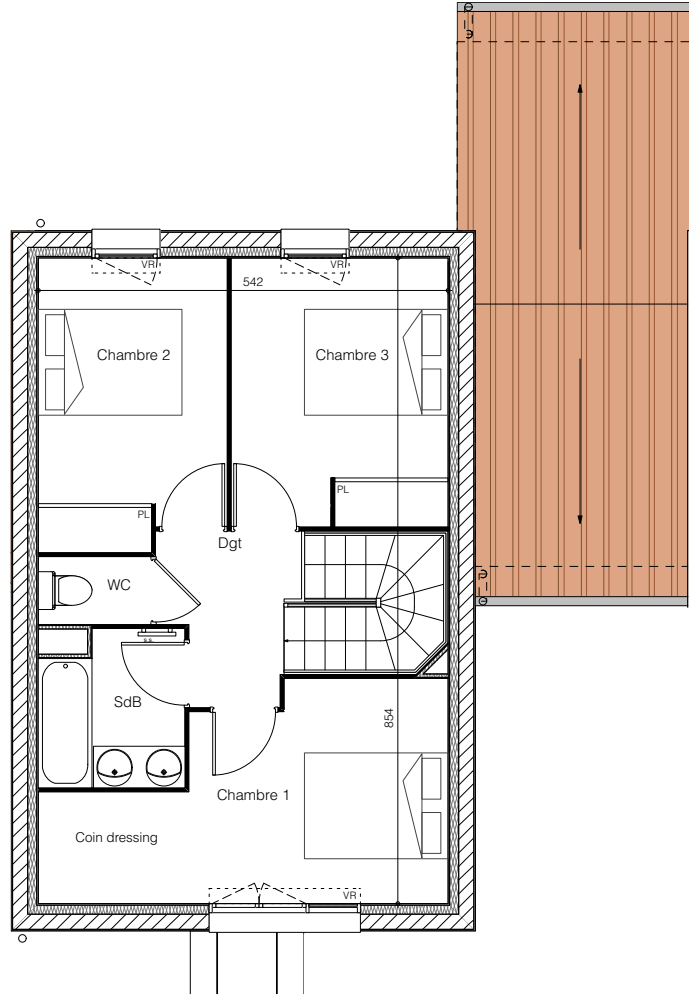


LES DEMEURES DE LA POINTE

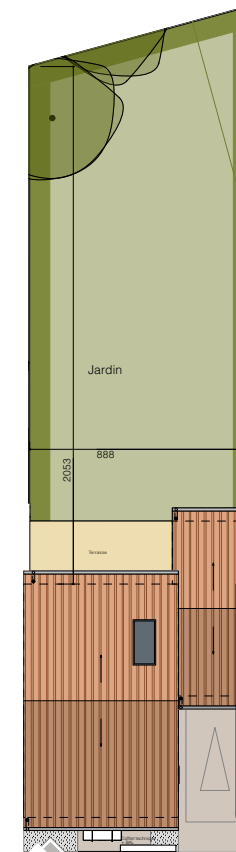


Plan RDC

0 1 2 3m



Plan R+1



Plan des jardins

MAISON M71	
Type T4	
Surface du lot: 290m ²	
Entrée / pl	4,28 m ²
Séjour / cuisine / pl	32,63 m ²
Chambre 1 / pl	12,61 m ²
dont coin dressing	2,94 m ²
Chambre 2 / pl	9,39 m ²
Chambre 3 / pl	10,18 m ²
SDE / WC	4,95 m ²
SdB	3,80 m ²
WC	1,35 m ²
Dégagement	3,67 m ²
Total Habitable	82,86 m²
Terrasse	14,15 m ²
Jardin	170,00 m ²
Garage (dont 4,13m ² de cellier)	18,28 m ²

0 1 2 5 10m

