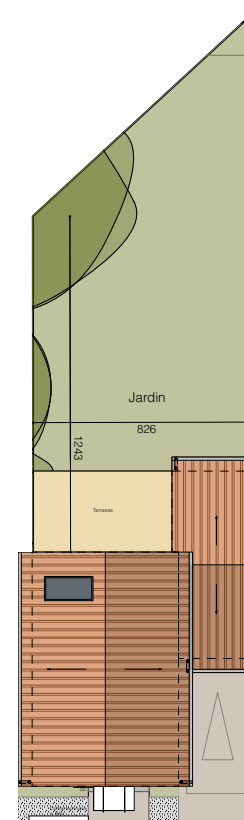
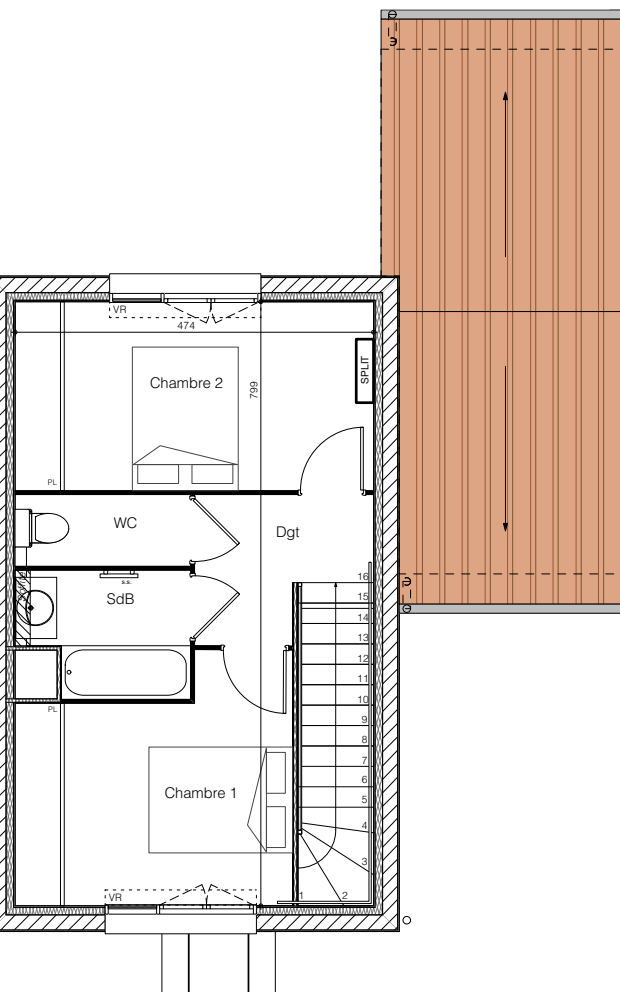
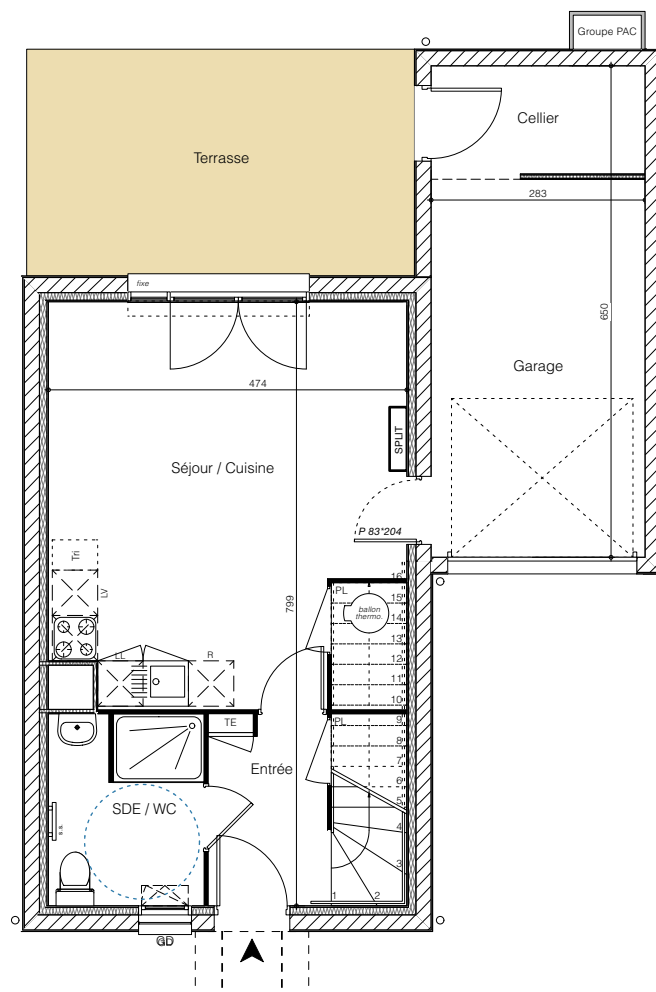




LES DEMEURES DE LA POINTE



MAISON M85	
Type T3	
Surface du lot: 220m²	
Entrée / pl	3,86 m²
Séjour / cuisine / pl	24,23 m²
Chambre 1 / pl	10,75 m²
Chambre 2 / pl	11,85 m²
SDE / WC	5,18 m²
SDB	3,53 m²
WC	2,20 m²
Dégagement	3,84 m²
Total Habitable	65,44 m²
Terrasse	15,38 m²
Jardin	109,00 m²
Garage (dont 4,13m² de cellier)	18,28 m²

0 1 2 5 10m

