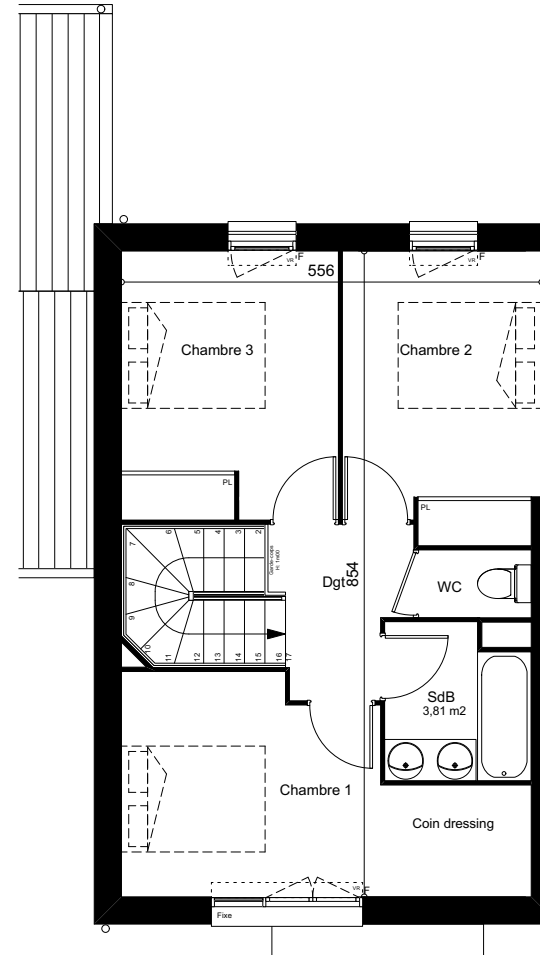
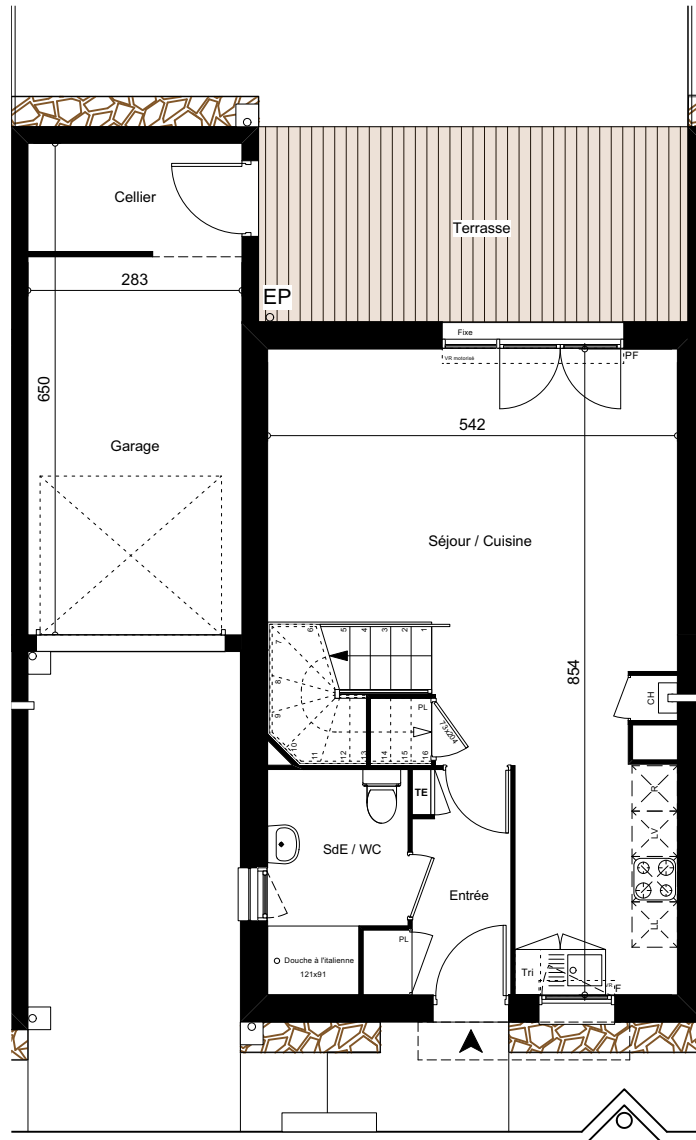




# LES DEMEURES DE LA POINTE



MAISON M08		
Type T4		
Surface du lot: 192m²		
Entrée / pl	4,27	m²
Séjour / cuisine / pl	32,52	m²
Chambre 1 / coin dressing	12,62	m²
Chambre 2 + pl	9,39	m²
Chambre 3 / pl	10,19	m²
SDB	3,81	m²
SDE / WC	4,95	m²
WC 2	1,35	m²
Dégagement	3,68	m²
<b>Total Habitable</b>	<b>82,78</b>	<b>m²</b>
Terrasse	14,65	m²
Jardin	71,00	m²
Garage (dont 4,05m² de cellier)	18,20	m²

